



Where Do I Find My **DATE CODE**?

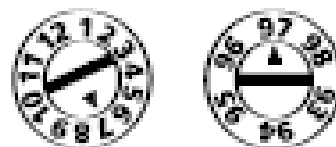
Your DATE CODE is found on *the main control unit* of your Remote Start or Security system. The main control unit is almost always black and is roughly the size of a man's empty wallet. It is most often installed up under the dash board on the driver's side of your vehicle.



What Does My **DATE CODE** Look Like?

Your DATE CODE may look like either 1 or 2 dials stamped into the plastic of your main control unit.

A) Two-dial system for date-coding system molded into the module: One dial indicates the year, the second dial indicates the month.



B) Single-dial system for date-coding system molded into the module: The year is marked at the center of the dial and the month is indicated by the dial.



Alternately, your DATE CODE may consist simply of a little white label that says something like "OK/8D". Here are some examples:

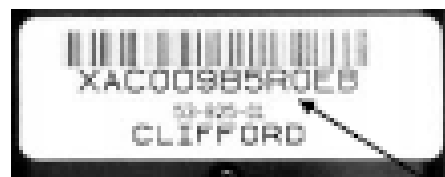


Disregard the "OK". The 3i and the 2L are the date codes from these labels.

If your Directed system is a Clifford or Avitol, the sticker may look more like this:



EXAMPLE: H0



EXAMPLE: R0

C) Serial number system The 3rd and 4th to last characters in the serial number is the date code for that particular unit. The LETTER identifies the month the unit was built and coordinates with the following chart:

JAN.	FEB.	MAR.	APR.	MAY	JUNE	JULY	AUG.	SEPT.	OCT.	NOV.	DEC.
A	B	C	D	E	F	G	H	J	K	L	M

Why Do I Need My DATE CODE?

The Date Code indicates the manufacturing date of your system, which is absolutely necessary for determining the correct replacement remote needed. We GUARANTEE that we will provide you with the proper transmitter for the date code that you indicate along with the model # of your system.

I Can't Find My **Date Code!**



Here are a couple of other ways to help you match your transmitter. These are not as reliable as determining the correct date code, and as such, we cannot guarantee a match using these methods.

[Replacement Part #](#) (RPN) Can sometimes be found on the back of your old transmitter.

[FCC ID #](#) Can sometimes be found on the back of your old transmitter.

If you have your original owners manual, you may even find your replacement model # printed in the book.